

This report is a reissue of, but not a replacement for Report No 16510.3.

This version incorporates an alternative name used for the same product, at request of client.



Accredited for compliance with ISO/IEC 17025 – Testing
NATA is a signatory to the ILAC Mutual Recognition Arrangement for the mutual recognition of the equivalence of testing, medical testing, calibration and inspection reports
Accreditation No. 2735

OIL-WET INCLINING PLATFORM SLIP RESISTANCE TEST

Dulux Avista Polyaspartic Sealer

Prepared for: Parchem Construction Supplies
Peter Battista
7 Lucca Road
WYONG NSW 2259

Specimen Description: Dulux Avista Polyaspartic Sealer, 500x1000 mm.

No. of Specimens: 1 off

Surface Structure: Smooth

Specimen Preparation: Washed with water and pH neutral detergent, rinsed then dried.

Specimen Configuration: Unfixed

Test Direction: Test direction not applicable.

Joint Type & Width: N/A

Air Temperature: 22°C

Test Standard: AS 4586:2013 Slip resistance classification of new pedestrian surface materials, Appendix D - Oil Wet Inclining Platform Test

Test Shoe: Leipzig V73-SP

Test Location: ATTAR 44-48 Rocco Drive, Scoresby, VIC, 3179

Test Date: 30 April 2021

Test Personnel: Dale Siegle and Marcus Braché

Displacement Space (rounded to the nearest 0.5cm ³ /dm ²):	Not tested
Displacement Space Assessment Group (Appendix E, AS 4586 - 2013):	Not tested
Corrected mean overall acceptance angle (α_{ave}) (rounded down to the nearest degree):	2°
Classification:	No Classification*

These results apply only to the specimens tested and it is recommended that before selection of flooring or paving materials the effect of service conditions, including maintenance procedures and wear on their slip resistance be checked.

*The corrected overall acceptance angle was too low to obtain a classification according to AS4586:2013

Reviewed By:



Daniel King BSc/BEng (mat) Hons., MIEAust
General Manager - Compliance Services
Approved Signatory



Marcus Braché
Senior Engineering Technician
Approved Signatory

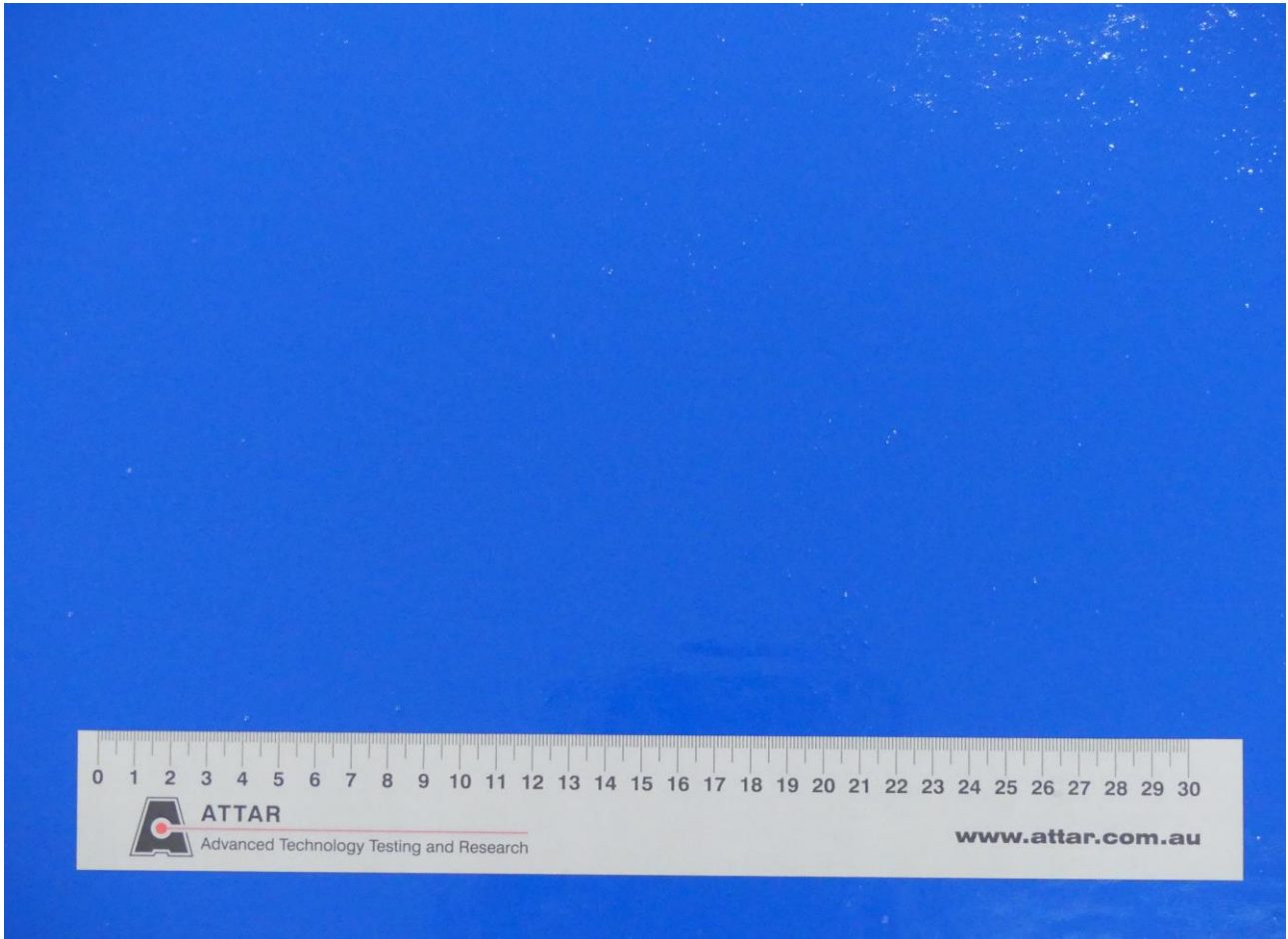


Figure 1: Dulux Avista Polyaspartic Sealer



CLASSIFICATION CRITERIA – AS 4586 - 2013
Oil Wet Inclining Platform Test – Appendix D

Compliance

TABLE 5: CLASSIFICATION OF PEDESTRIAN SURFACE MATERIALS ACCORDING TO THE OIL-WET INCLINING PLATFORM TEST

Classification	Angle, degrees
No Classification	<6
R9	≥6 <10
R10	≥10 <19
R11	≥19 <27
R12	≥27 <35
R13	≥35